

HEBA LG light curing unit Typ 3 *LED*

HEBA-OTOPLASTIK Labortechnik u.
Einrichtungen GmbH & Co. KG
Hauptstr. 42
Tel. + 49 6022 681600
E-Mail: info@heba.de

D-63853 Mömlingen
Fax: +49 6022 31663
www.heba.de



Operating instructions

HEBA LG light curing unit Typ 3 *LED* REF 44002



Please read the operating instructions carefully before working with the device!
Please keep the operating instructions in a safe place for future reference!

Operating instructions

Inhaltsverzeichnis

- I. General**
- 2. Safety Regulations**
 - 2.1 For a Safety Conscious Work Environment
- 3. Scope of Delivery, Technical Data**
 - 3.1 Scope of Delivery
 - 3.2 Accessories
 - 3.3 Technical Data
- 4. Installation, Handling, Initial Operation**
 - 4.1 Assembling and Connecting the Unit
 - 4.2 Initial Operation and Handling
 - 4.3 Advice for Disposal
- 5. Working with UV-Polymerizates**
 - 5.1 Specific Storage Regulations
 - 5.2 Specific Processing Indications

HEBA LG light curing unit Typ 3 *LED*




5.3 Lacquering with LP/H Lacquer and Lacquer HEBAlac am

6. Warranty / Service / After-Sales Service

1. General

The light-curing unit Typ 3 LED is suitable for a number of uses in the acoustician shop, during home visits and in the otoplastic laboratory. Service operations can be executed immediately right in the shop – fast, efficiently, no lengthy preparation needed. So you can enjoy more independence while offering your customer the best possible service.

2. Safety Regulations

	The electrical light-curing unit Typ 3 LED is used for the polymerization of UV-curing lacquers. A use other than described in the operating instructions may lead to injuries of the operator or of third persons. Furthermore, the device or other material assets may be damaged. The device must be used in technically perfect condition only and the safety regulations must be strictly complied with.
	Warning hot surfaces – do not touch the LED reflectors – risk of burns!
	Warning UV radiation – do not look into the radiation source – risk of damage to the eyes!

2.1 For a Safety Conscious Work Environment



- Protect the unit from dust. Use the unit on dry working places only.
- Store the unit in closed rooms.
- Qualified and trained persons must use the device only.
- Children must be kept away from the unit.
- Surrounding temperature between 10 °C and 30 °C. Relative air humidity between 10% and 70 %.
- Before putting the device into operation, the user must read the operating instructions and ask the manufacturer in case of any questions.
- Use the unit in perfect and clean condition only and by observing the operating instructions.
- Connect the device to permissible sockets only.
- Use the included cable only.
- Please adhere to the acknowledged safety regulations.
- This device is used for the processing of UV-curing materials in a spectral range of 360 – 400 nm.
- Please also adhere to the processing instructions for each material used.
- Disconnect the unit from electricity supply prior to any service or maintenance.
- Do not pull the mains plug out of the socket at the mains cable.
- Should the mains cable be damaged, it must be replaced at once. Defective mains cables must not be used.
- The unit may not be opened by operations. There are no interchangeable parts such as fuses inside.
- Repairs may only be executed by the manufacturer.

Advice for cleaning: Clean the unit with a moist cloth only – do not use solvents, do not douse the unit into water.

HEBA LG light curing unit Typ 3 *LED*



On self-accomplished repairs or if other spare parts are used, all warranty and liability claims will become extinct!

3. Scope of Delivery, Technical Data

3.1 Scope of Delivery

Please check whether the delivery is complete and whether all parts are free from transport damage. Immediately inform us or the distributor about missing parts or transport damage.

The HEBA LG light curing unit Typ 3 *LED* REF 44002 consists of:

- 1 light-curing unit HEBA LG LED REF 44002
- transparent protective film for working area
- power supply
- operating instructions and processing instructions

Furthermore, we can offer a variety of devices and useful accessories from our wide range of products such as:

- lacquers and accessories
- cutters, drills and tools
- technical units • compressors for compressed air
- compressed-air sprays
- turning motor REF 44021
- turning motor (battery-powered) REF 44020

3.2 Accessories for the HEBA LG light curing unit Typ 3 *LED

Insert and metalized carton REF 44130 Metalized carton (5 units) with adhesive dots REF 44131

3.3 Technical Data of the HEBA LG light curing unit Typ 3 *LED

Power supply: $U = 100 - 240 \text{ V (AC)}$

Mains frequency: $f = 50/60 \text{ Hz}$

Power input: $P = 22 \text{ VA}$

Life expectancy of the LED bulbs: 20.000 operating hours

Connection: Euro plug

4. Installation, Handling, Initial Operation

4.1 Assembling and Connecting the Unit

The electrical HEBA LG light curing unit Typ 3 *LED* corresponds to the state-of-the-art standards and to the acknowledged safety regulations. Nevertheless dangers can arise. Please observe the following, before putting the unit into operation:

- The device is to be positioned in a way that a fast separation of mains is possible very easily and at any time.
- Position the device horizontally and place it in its suitable working position.
- Protect the unit against vibration.
- Check whether the unit is dry.
- Check whether the device is in technically perfect condition, especially the mains cable!
- Plug in the mains cable.

4.2 Initial Operating and Handling of the HEBA LG light curing unit Typ 3 LED

Set the timer to the desired time (1, 3 or 5 minutes) by pressing the timer button and then start the polymerization process by pressing the start button.

HEBA LG light curing unit Typ 3 *LED*

Meaning of illuminating diodes

- 1 minute •
- 2 minutes • •
- 5 minutes • • •

Stopping the polymerization process

Keeping the start-stop-button pressed longer, the polymerization process can be stopped. In case of not using the device for 30 minutes, it changes into state of rest. The illuminating diodes turn off.

4.3 Advice for Disposal

The symbol on the unit means, that this unit may not be disposed in general trash, but must be disposed according to regional recycling guidelines for electronic devices and applicable environmental and disposal rules. For further information on disposal and recycling please contact your regional authorities or your distributor of the unit.

5. Working with the UV-Polymerizates

5.1 Specific Storage Regulations



The materials are to be stored in a cool and dry place (see processing instructions for the various materials). Please mind that the containers are closed at any time, when not in use and that they are closed immediately after use. Otherwise, there might be danger of activating an unintentional chemical reaction through the permeability of light (curing of the material). The expiry date, applicable when stored adequately, is indicated on the product. TIP: We recommend keeping already opened packages of lacquers or instant adhesives in the refrigerator.

5.2 Specific Processing Indications

Please avoid direct skin contact with the materials. Before using them protect your hands by using special skin protection products or wearing gloves. The materials are to be used by authorized and trained staff only. Processing of the lacquers should be done underneath a suction unit. Always use the lacquering brushes for one type of lacquer only. Details on the disposal for each product can be taken from our material safety data sheets, which can be downloaded in PDF format from our website: www.heba.de.

5.3 Lacquering with LP/H Lack – HEBA lac am

For the surface finish all at present known hard acrylate– based otoplastic materials can be coated with LP/H lacquer. Using the HEBA lac am, you can protect hard earmolds with a special antibacterial coating with high gloss effect.

- The entire surface of the earmold always has to be roughened with corundum paper, grit 120, (REF 71500) first.
- Then, fix the BTE earmold onto a piece of nylon tube (REF 23000). For an ITE earmold, the alligator clip of the turning motor can be fixed on the opened battery door.
- Then, clean and degrease the surface carefully with surface cleaner (REF 46400).
- Apply the lacquer evenly with the brush. Alternatively, the earmold can also be immersed in a dipping jar filled with lacquer; but do not immerse ITE earmolds with built-in electronics or face-plates! Then, make sure that excess lacquer is shaken off.

HEBA LG light curing unit Typ 3 *LED*

- Let the lacquer dry in the light-curing unit rotating for about 2 – 3 minutes. Afterwards the earmold is directly ready for use.

6. Warranty / Service / After-Sales Service

The warranty period for our devices starts with the date of delivery and is 12 months. Excluded from the warranty are modifications of the unit as well as all other parts of the unit which are subject to wear and tear.



In case of improper handling of the electric light-curing unit all warranty and liability claims will become extinct!

We will be pleased to be of assistance to you in case of damage or other malfunctions:

**HEBA-OTOPLASTIK Labortechnik u.
Einrichtungen GmbH & Co. KG**
Hauptstr. 42 D-63853 Mömlingen
Tel. 06022 / 681 600 Fax: 06022 / 31663
E-Mail: info@heba.de www.heba.de

Please indicate the following data

Device type:
Electrical HEBA LG light curing unit Typ 3 LED



serial no.:

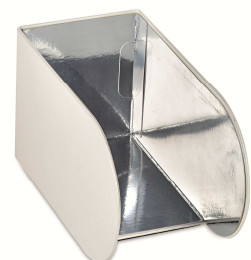
.....
(see label)

Spare parts and accessories for HEBA LG light curing unit Typ 3 *LED*

Insert inclusive 5 Units of metalized carton

REF 44130

The all sides reflecting insertion makes the HEBA-LG LED Typ 3 hand-some allrounder: Practical assistant at the service desk or fully-fledge production unit using the insertion slide-in, e.g. for the production of earmolds or ITE shells.



Metalized carton for insert (5 units)
with adhesive dots for fixing at the insert

REF 44131

HEBA LG light curing unit Typ 3 *LED*

Turning motor battery-powered

REF 44020

During post-production lacquering and coating, the continuous rotation guarantees that the material is distributed evenly across the surface (prevents the build-up of sags), the polymerization takes place gently and homogeneously. Turning motor incl. batteries for battery operation; Power supply unit (optionally available).

Batteries: 2x AA

Dimensions: W80 x H95 x D55 mm

Weight: 0,5 kg

Revolutions: approx: 17 U/min



Turning motor electrical

REF 44021

Turning motor incl. Power supply unit (alternatively can be operated with batteries, not included).

Power supply:

Input: AC 100-240V 50/60 Hz, 180 mA

Output: DC 5V; 1000 mA



© Fotografie: egger Otoplastik + Labortechnik GmbH, Aybühlweg 59, 87439 Kempten/Germany